

Premium Flooring Collection



Hanwha
FLOORING 한화



Contents

- 03 About Hanwha
- 04 Why Trust Hanwha Flooring?
- 05 The Hanwha Advantage

Luxury Vinyl Tiles (LVT)

- 07 GoldTile WideWood *Soft*
- 07 GoldTile WideWood *Basic*
- 08 GoldTile WideWood *Designer*
- 08-09 GoldTile Daecheung Maru
- 09-10 GoldTile Squares *450 Series*
- 11 GoldTile Squares *600 Series*
- 12 WildTile Wood
- 13 WildTile Square

Vinyl Composition Tiles (VCT)

- 14-15 HanwhaTile

Vinyl Sheets

- 16 Imperial
- 16 Sorigium
- 17 Myoungga
- 18 Brita
- 19 Summita
- 20 Corona Premium
- 21 Gracia Premium

Specialty Flooring

- 22-25 RubberTile
- 26-27 CarpetTile
- 28 Kissen
- 28 Unibamboo
- 29 CleeTile

- 30 Installation and Care Guide
- 31 Specifications
- 32 Certifications
- 33 About Us
- 34-35 Other Products



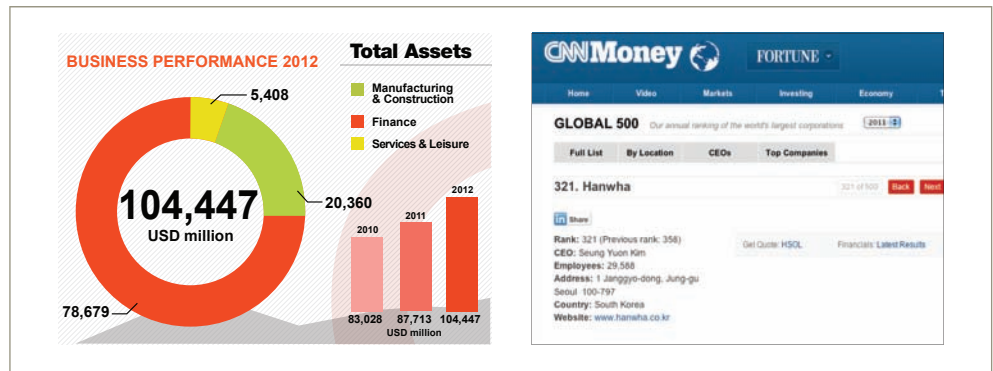


Hanwha Group at Glance

Founded in 1952, Hanwha is one of the top 10 conglomerates in South Korea with businesses in the following sectors: defense and explosives, manufacturing & construction, financial services and retail & leisure.



A Fortune Global 500 company with total assets of USD 104 billion and total sales of USD 30 billion in 2012, Hanwha has over 53 domestic affiliates, 78 global network partners and with global footprint in Europe, Americas, China, Southeast Asia and the Middle East.



About Hanwha L&C Corp.

Hanwha L&C is Korea's leading supplier of high-tech materials for construction and interior decoration, automotive parts, electronics, solar power and industrial materials for almost half a century.

Hanwha L&C was the first domestic flooring materials maker to develop proprietary materials for the health and well being of its customers. Our world caliber quality was recognized and received the World Best Awards (WBA) in 1999 and placed first on KMAC's Korea Customer Satisfaction Index for 3 years in a row.

Why Trust Hanwha Flooring?

1 Premium Design

Hanwha is the designer's haven for flooring – get access to our widest selection of original, classic and contemporary designs of various patterns, textures and sizes – guaranteed to add that touch of class to your room.

2 Premium Product Performance

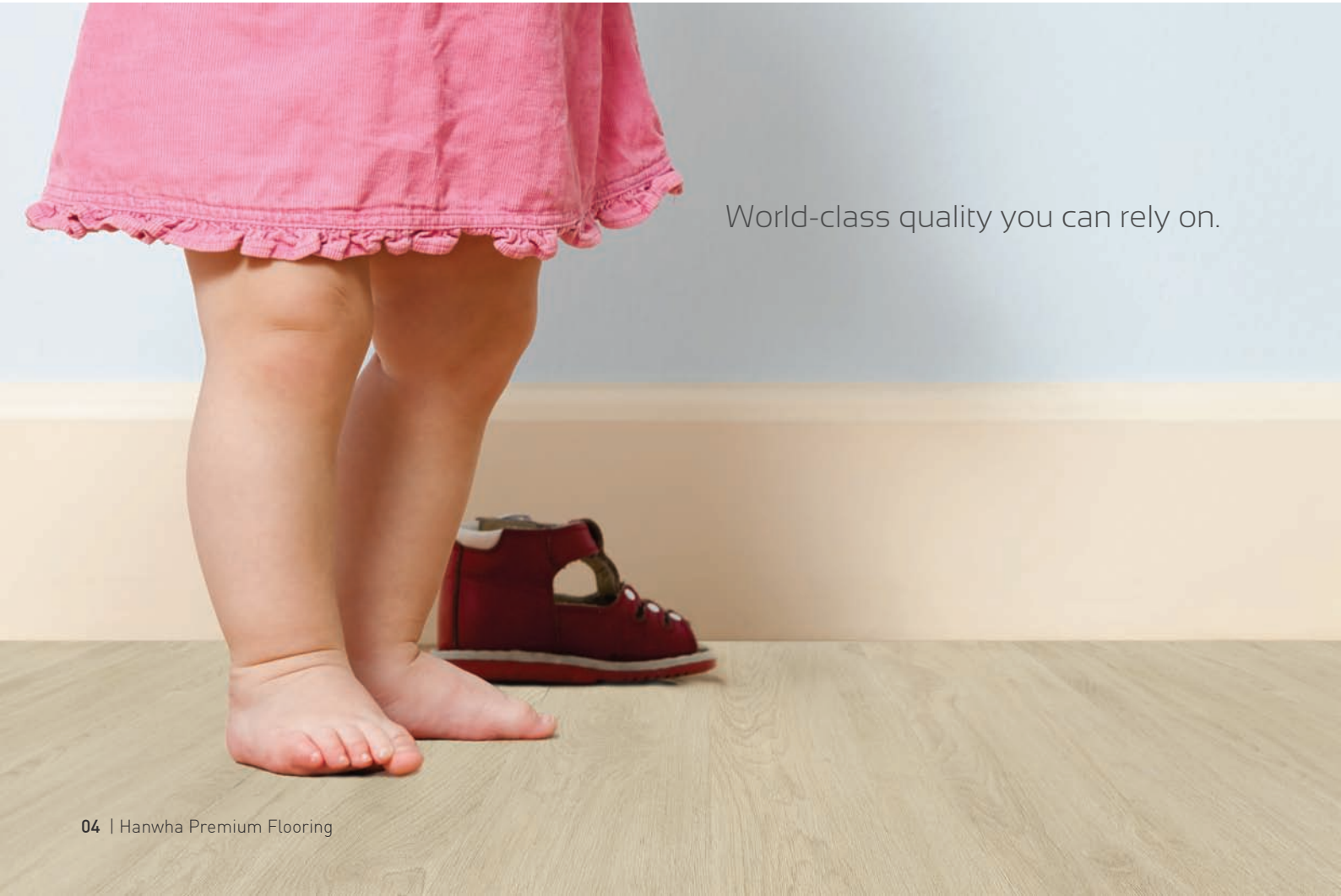
Passing the standards of the American Society for Testing & Materials (ASTM), Hanwha Flooring complies with the international standards for abrasion, fire and chemical resistance, dimensional stability, load resistance, residual indentation, resistance to heat and light, tensile strength and tear resistance. Hanwha flooring is backed by quality you can rely on day after day.

3 Premium Innovation

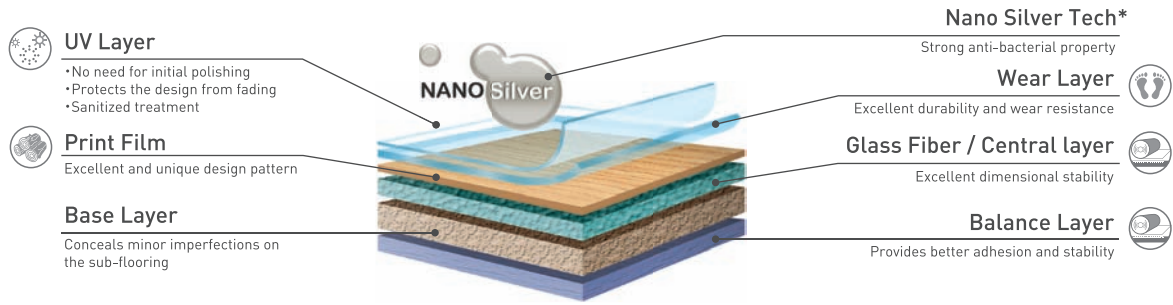
Hanwha is a high-tech materials company with distinct advantage as a manufacturer of PVC resins and PVC-based materials, developing breakthrough technologies such as the Clee Tile, the first TPO-based (Thermo Plastic Olefin), non-PVC, eco-friendly flooring that is safe for children & the environment.

4 Premium Sustainability

Hanwha is on a mission to grow greener. We have our sights set firmly on using renewable energy to achieve sustainable green growth on a global scale by reducing our environmental footprint, and those of our suppliers, by fostering active partnerships with like-minded organizations, and through various social contributions.



World-class quality you can rely on.



DURABLE

Hanwha flooring will stand the test of time.

- ▶ Surface will last even with heavy traffic due to application of wear layer
- ▶ Special UV coating prevents color from fading even when exposed to sunlight
- ▶ Does not tear, crack or result to indentation upon impact

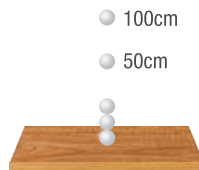
Deterioration Resistant Test

Weighted sandpaper was placed on top of the materials and it was rotated 1000 times.



Metal Ball Shock Test

1kg ball was dropped from 50cm and 100cm height to test the floor shock result.



Drop Height	Hanwha Flooring	Laminated Flooring	Wooden Flooring
50cm	No Change	Surface Slightly Broken	Surface Pressed
100cm	No Change	Surface Broken	Surface Pressed



FIRE RETARDANT

Hanwha flooring prevents spreading of fires.

- ▶ Will not catch fire due to cigarette butts and fire-causing materials
- ▶ Will extinguish fire upon contact

* Hanwha Flooring oxygen index is 45-49% vs 21% oxygen concentration in the air. Materials with oxygen index greater than 21% will not continue to combust.



WATERPROOF

Hanwha flooring is non-porous.

- ▶ Water and other liquid substances will not penetrate your flooring in case of spillage or flooring compared to laminated or wood flooring
- ▶ Ideal for flood-prone or high-moisture content areas

* Selected flooring only



DIMENSIONALLY STABLE

Hanwha flooring will not shrink, expand or warp.

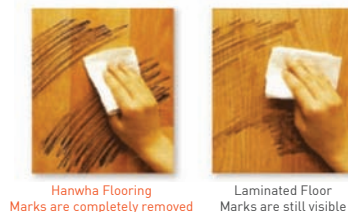
- ▶ Dimension is stable even when exposed to moisture or heat
- ▶ Flooring will be free from unsightly gaps after installation



CHEMICAL AND STAIN RESISTANT

Hanwha flooring has protection from common household and office substances.

- ▶ No permanent stain or change in surface appearance when exposed to common household and office substances such as coffee, soy sauce, acetone, other acids or strong bases
- ▶ Marks can be easily wiped and removed



EXCELLENT SOUND INSULATION

Better sound insulation compared to ceramic, laminated or wood flooring.



ANTI-BACTERIAL *

Hanwha flooring puts top priority on health and wellbeing.

- ▶ Treated with nano-silver and anti-bacterial coating
- ▶ Kills 99.9% of bacteria upon contact
- ▶ Recommended for hospitals, schools and daycare centers



EASY TO INSTALL & MAINTAIN

Hanwha flooring is easy to install and maintain.

- ▶ Can be installed by non-professionals and end-users
- ▶ Change and reuse the material any time
- ▶ No cement dust, heavy loading or messy seam lines
- ▶ No need to vacate renovation site during installation
- ▶ Easy to clean – simply wipe and mop



Visit our homepage.

Creating better quality of life.

At the heart of Hanwha Flooring is a mission: To pave the way of high quality living *for you*.

We, at Hanwha Flooring, begin to fulfill this dream from the ground up. We constantly have you in mind, as we endeavor to provide the best quality flooring solutions possible. In the coming pages, we are proud to present to you the fruit of decades of passion for flooring. We are committed to bring you to greater heights.

Let's take the journey together.



Spanish Cedar GWT-W 3911



Philippine Mahogany GWT-W 4974

WideWood Soft Series

Smooth. Natural. Distinguished.



The Original WideWood Soft Series from the GoldTile Collection offers sophisticated elegance with calm appearance. Wood patterns are derived from the softwood family such as Pine, Cedar and Fir, imitating its lightly textured finish.

■ Dimension : 3.0mm(T) x 940mm(L) x 186mm(W)



Natural Bamboo GWT-W 3601



Spanish Cedar GWT-W 3911



Chinese Bamboo GWT-W 3602



Cedar of Lebanon GWT-W 3912



Austrian Pine GWT-W 3901



California Redwood GWT-W 3913



Caribbean Pine GWT-W 3902



Oregon Sequoia GWT-W 3914



Virginia Pine GWT-W 3903

WideWood Basic Series

The Classic Wood Flooring.



The Original WideWood Basic Series from the GoldTile Collection exhibit the timeless beauty of wood flooring, inspired by the natural patterns of traditional hardwoods such as Oak, Maple and Walnut.

■ Dimension : 3.0mm(T) x 940mm(L) x 186mm(W)



Sugar Maple GWT-W 3521



African Satinwood GWT-W 3714



Hedge Walnut GWT-W 3522



White Water Oak GWT-W 4901



Bleached Satinwood GWT-W 3711



Scarlet Oak GWT-W 4902



Classic Satinwood GWT-W 3712



Philippine Narra GWT-W 4943



Asian Satinwood GWT-W 3713



Philippine Mahogany GWT-W 4974



Brazilian Mahogany GWT-W 4975

Applications: Commercial spaces such as offices, coffee shops, boutiques, restaurants, hotels, resorts, health spas, schools. Residential spaces such as living room, dining area, and bedrooms.

*Note: Colors may vary from actual tile.

WideWood Designer Series

Modern. Upbeat. Sophisticated.



For that up-to-date trendy look, the Original WideWood Designer Series from the GoldTile Collection offers the best patterns you can choose from, imitating the look of veneer, parquet and burnt wood finishes, to achieve a more distinct wood design.



New York Promenade GWT-W 3821

■ Dimension : 3.0mm(T) x 940mm(L) x 186mm(W)



New York Promenade GWT-W 3821



Chicago Parade GWT-W 4841



Toronto Boardwalk GWT-W 3822



Tokyo Boulevard GWT-W 4842



Sydney Waterfront GWT-W 3831



Beijing Crescent GWT-W 4983



Barcelona Esplanade GWT-W 3832



Berlin Walkaway GWT-W 4986



Dubai Avenue GWT-W 4832

Applications: Commercial spaces such as offices, coffee shops, boutiques, restaurants, hotels, resorts, health spas, schools. Residential spaces such as living room, dining area, and bedrooms.

Daecheung Maru

Safety, cleanliness, and elegance all in one.



Ultimate luxury vinyl flooring where beauty and strength meet, the Daecheung Maru Series from the GoldTile Collection offers specially designed flooring treated with antimicrobial nano-silver coating to eliminate bacteria and fungi upon contact. Its suave and polished look is ideal for high-end interior environments.



■ Dimension : 3.0mm(T) x 914mm(L) x 100mm(W)



Café Mild Koa

GHS 1013



Café Latte Oak

GHS 1014



Regular Café Oak

GHS 1015



Macchiato Brown Walnut

GHS 1011



Caramel Yellow Walnut

GHS 1012

*Note: Colors may vary from actual tile.



Cappuccino Brown Oak GHL 1023

■ Dimension : 3.0mm(T) x 920mm(L) x 180mm(W)



Vienna Creamy Oak GHL 1021



Java Brown Oak GHL 1025



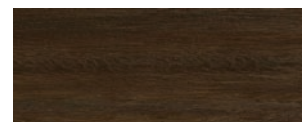
Milk Chocola Oak GHL 1022



Cacao Brown Oak GHL 1026



Cappuccino Brown Oak GHL 1023



Dark Espresso Oak GHL 1027



Mocha Brown Oak GHL 1024

Applications: Commercial spaces such as offices, coffee shops, boutiques, restaurants, hotels, resorts, health spas, schools. Residential spaces such as living room, dining area, and bedrooms.

450 Series

Aesthetic flooring at its finest.



The GoldTile 450 Series offers the widest range of patterns in exciting textures with stunning expressions. It comes in Abstract, Carpet, Marble, Unique, Granite, and Cork themes.

Applications: Commercial spaces such as offices, coffee shops, boutiques, restaurants, hotels, resorts, health spas, schools. Residential spaces such as living room, dining area, and bedrooms.



Lorena Umber Brown PT- C 9713
Amanda Blue Green PT- C 9709

Carpet

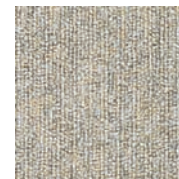
■ Dimension : 3.0mm(T) x 450mm(L) x 450mm(W)



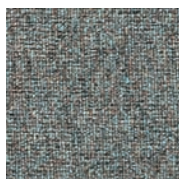
Francesca Apricot Beige PT- C 9701



Helena Blush Pink PT- C 9703



Elizabeth Blue Gray PT- C 9707



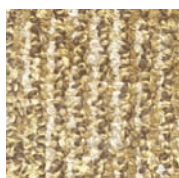
Amanda Blue Green PT- C 9709



Patricia Cool Grey PT- C 9712



Lorena Umber Brown PT- C 9713



Rebecca Sand Brown PT- C 9721



Dianna Burnt Brown PT- C 9722



Olivia Taupe Grey PT- C 9723



Victoria Deep Grey PT- C 9724

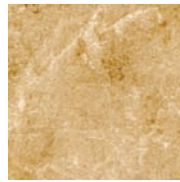
*Note: Colors may vary from actual tile.

Marble • Granite

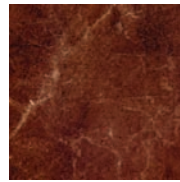


Westchester Marble PT- M 7271
Classic Yule PT- M 7276

■ Dimension : 3.0mm(T) x 450mm(L) x 450mm(W)



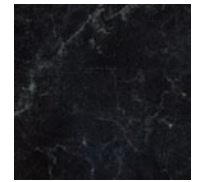
Westchester Marble
PT- M 7271



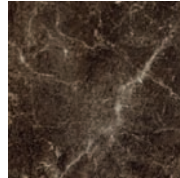
Tennessee Red Marble
PT- M 7272



Connemara Grey
PT- M 7273



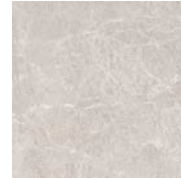
Ashford Black
PT- C 7274



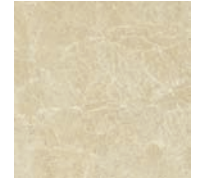
Brown Purbeck
PT- M 7275



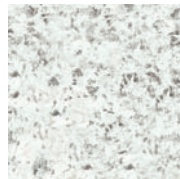
Classic Yule
PT- M 7276



Carrara Grey
PT- M 7281



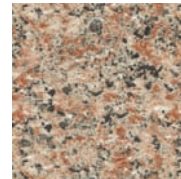
Crema Marfil
PT- M 7282



Grey Batholith
PT- G 7121



Yellow Granite
PT- G 7122



Red Biotite
PT- G 7124

Abstract • Metal • Unique



Summer Cork PT- A 7292

■ Dimension : 3.0mm(T) x 450mm(L) x 450mm(W)



Spring Cork
PT- A 7291



Summer Cork
PT- A 7292



Winter Cork
PT- A 7293



Autumn Cork
PT- A 7294



Bisque
PT- A 5011



Lazuline
PT- A 5012



Café noir
PT- A 5013



Grullo Diseño
PT- A 8201



Mauve Compendio
PT- A 8202



Linen
PT- A 8111



Arsenic
PT- A 8112



Matted Silver
PT- MT 7001



Antique Bronze
PT- MT 7002



Palmyra
PT- U 8312



Rome
PT- U 8311



Cyrene
PT- U 8313

*Note: Colors may vary from actual tile.

600 Series

Wider. Fuller. Better

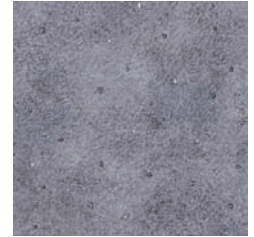
Another innovation by Hanwha, the GoldTile 600 Series is the first LVT with 600 mm X 600 mm dimensions, resulting to wider area coverage, faster and easier installation and less of the undesirable seam lines. It comes in stylish carpet, stone, and marble designs.

Applications: Commercial spaces such as offices, coffee shops, boutiques, restaurants, hotels, resorts, health spas, schools. Residential spaces such as living room, dining area, and bedrooms.

Dimension : 3.0mm(T) x 600mm(L) x 600mm(W)



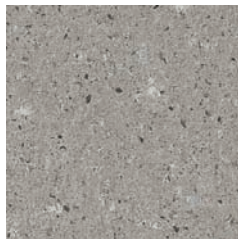
Bakken Shale
PT- M 7441



Marcellus Shale
PT- M 7442



Feldspar Sandstone
PT- S 7451



Graywacke Sandstone
PT- S 7452



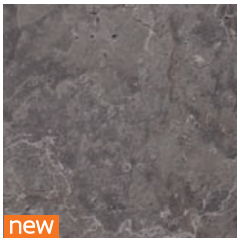
new
Lavagna Slate
PT- M 7471



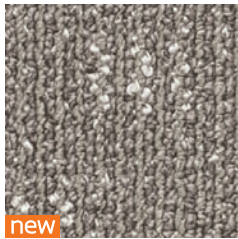
new
Galicia Slate
PT- M 7472



new
Hornister Slate
PT- M 7473



new
Skiddaw Slate
PT- M 7474



new
Veronica Ash Blue
PT- C 7491



new
Angelica Gold
PT- C 7492



new
Dorothy Maude
PT- C 7493



new
Catherine Cordovan
PT- C 7494



Angelica Gold PT- C 7492

*Note: Colors may vary from actual tile.

■ Dimension : 3.0mm(T) x 940mm(L) x 186mm(W)



Congo Oak WTW-4462



Kinabalu Oak WTW-4463



Sapo Oak WTW-4464



Ecuador Oak WTW-4465



Valdivian Walnut WTW-4471



Daintree Walnut WTW-4472



Sabah Walnut WTW-4474



Sichuan Elm WTW-4481



Borneo Elm WTW-4482



Montecristo Elm WTW-4483



Amazon Elm WTW-4484



Galapagos Mahogany WTW-4491



Karawari Mahogany WTW-4492



Komodo Mahogany WTW-4493

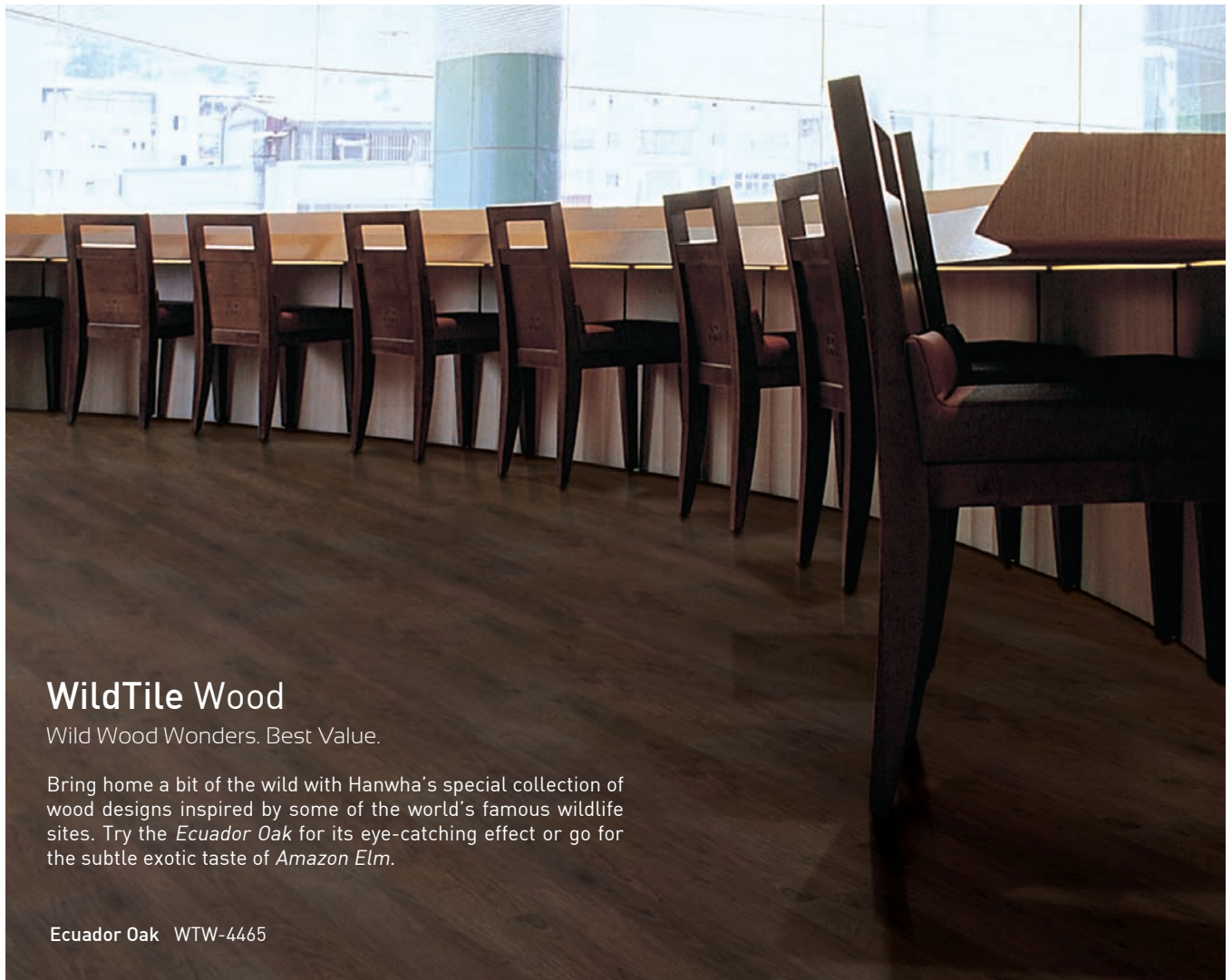


Garamba Mahogany WTW-4496



Madagascar Mahogany WTW-4497

Applications: Residential spaces such as living room, bedrooms, dens, attics, and family rooms



WildTile Wood

Wild Wood Wonders. Best Value.

Bring home a bit of the wild with Hanwha's special collection of wood designs inspired by some of the world's famous wildlife sites. Try the *Ecuador Oak* for its eye-catching effect or go for the subtle exotic taste of *Amazon Elm*.

Ecuador Oak WTW-4465

*Note: Colors may vary from actual tile.

Dimension : 3.0mm(T) x 450mm(L) x 450mm(W)



Impala Ivorystone
WTS-4411



Copperhead Cave
stone WTS-4413



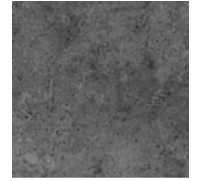
Prairie Greystone
WTS-4414



Rhinoceros Lime
stone WTS-4415



Beaver Fossilstone
WTS-4416



Elephant Earthstone
WTS-4417

Applications: Residential spaces such as living room, bedrooms, dens, attics, and family rooms



new
Armadillo Gray
WTS-4421



new
Bonobo Dark Taupe
WTS-4422



new
Oriole Browngrey
WTS-4423



WildTile Square

Style & Value in One.

The WildTile Square Collection is made to suit the specific needs of residential flooring from kitchen, dining, living, or bedroom.

Armadillo Grey WTS-4421

*Note: Colors may vary from actual tile.

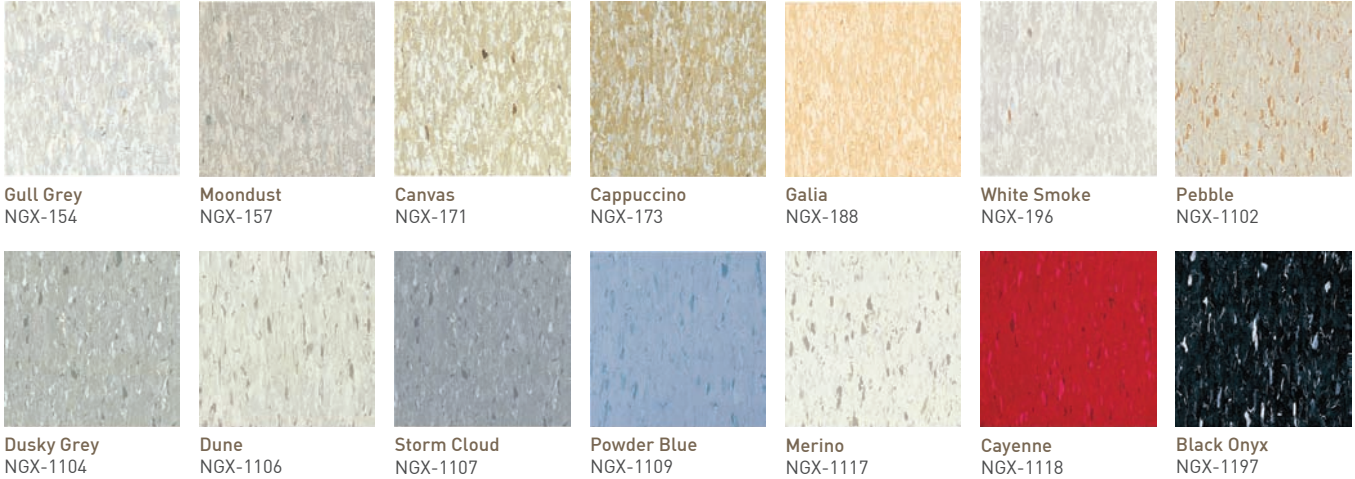
Your no-compromise vinyl flooring at best value.

Enjoy superior product functionality at less cost with the HanwhaTile Collection - manufactured for enduring quality performance.



Deluxe

▪ Dimension : 2.0/3.0mm(T) x 300mm(L) x 300mm(W) • 3.0mm(T) x 450mm(L) x 450mm(W)



Deluxe Gold

▪ Dimension : 3.0mm(T) x 450mm(L) x 450mm(W)



Applications: offices, corridors, lobbies, banks, department stores, supermarkets, hospitals, schools, heavy traffic areas



Merino NGX-1117 / Powder Blue NGX-1109 / Black Onyx NGX-1197

*Note: Colors may vary from actual tile.

MVP Tile

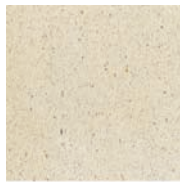
▪ Dimension : 3.0mm(T) x 450mm(L) x 450mm(W)



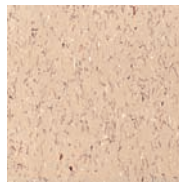
Cream MVP-801 / Custard MVP-802



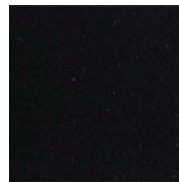
Cream MVP-801



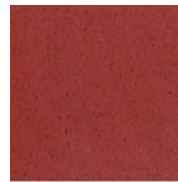
Custard MVP-802



Yogurt MVP-803



Black Pepper MVP-807



Cherry MVP-808



Caramel MVP-815

Conductive Tile

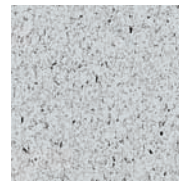
▪ Dimension : 3.0mm(T) x 450mm(L) x 450mm(W)



Moonscape HCD-501 / Greyser HCD-503



Moonscape HCD-501



Greyser HCD-503



Electrostatic dissipation in style.

Aside from preventing electrostatic from building up, the ConductiveTile disperses the electric flow accumulated from outside, providing semi-conductor fabricators, test and control rooms, and server pads with the hazard-free environment it requires.

Applications: computer rooms, test rooms, server pads, control rooms, clean rooms, semiconductor facilities and others that require anti-static flooring.

*Note: Colors may vary from actual tile.

Majestic Flooring at your fingertips.

The Imperial Collection offers you the look of royalty for your home or commercial space.

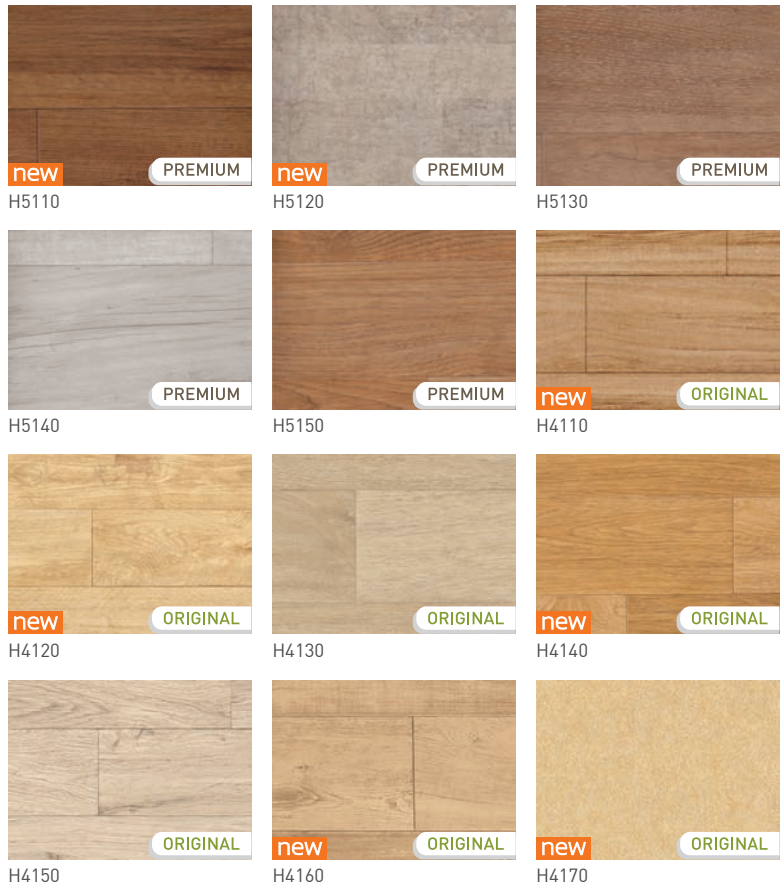


H4130



P: 1.83m x 25m 3.0mm
O: 1.83m x 25m 2.7mm

Applications: Residential spaces such as living room, bedrooms, attics. Customized vehicles such as luxury tour buses, etc.



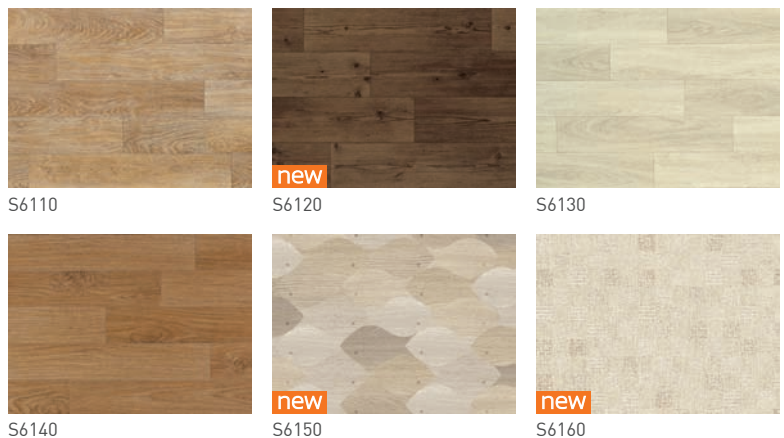
The supreme vinyl sheet.

The Sorigium Collection is the best residential vinyl sheet product in South Korea, recognized as a "Hit Product" by Seoul Newspaper, with an overall thickness of 4.5 mm, unique wood patterns, special sound insulation, and nano-silver antibacterial treatment.



S6150

Applications: Residential spaces such as living room, bedrooms, attics. Customized vehicles such as luxury tour buses, and studio rooms



1.83m x 18m 4.5mm



*Note: Colors may vary from actual tile.

Prestigious wood designs made extra long.

The Myoungga Collection has a special nano-silver antibacterial treatment and various distinct, smooth wood finishes with the longest length of 30 m making it best for spacious residential rooms.



M3110

 P: 1.83m x 30m  2.2mm



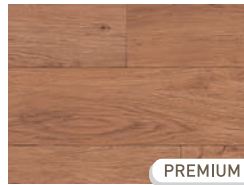
M3110



M3120



M3130



M3140



M3150



M3160

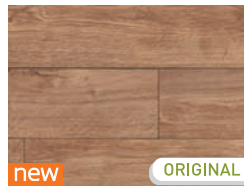


M3170



M2120

 O: 1.83m x 30m  2.0mm



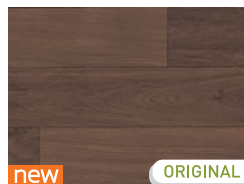
M2110



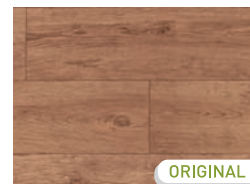
M2120



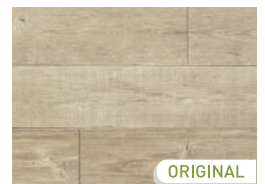
M2130



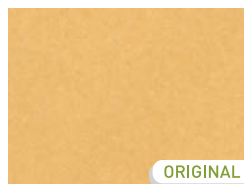
M2140



M2150



M2160



M2170



Applications: Residential spaces such as living room, bedrooms, attics. Customized vehicles such as luxury tour buses, and studio rooms

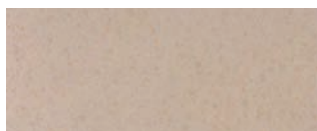
*Note: Colors may vary from actual tile.

Built-to-Last.

Brita Collection is the ultimate choice for roll form that can endure heavy foot traffic for many years. Safe for the home, its added non-woven fabric layer makes it especially fire-retardant.



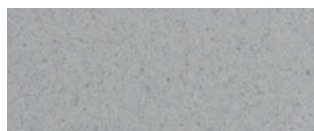
BR-8641



BR-8620



BR-8631



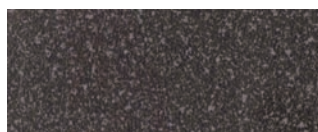
BR-8633



BR-8634



BR-8635



BR-8638



BR-8641



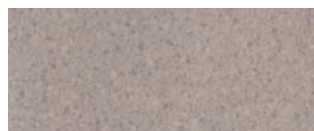
BR-8642



BR-8643



BR-8644



BR-8645

Applications: Hospitals, offices, factories & plants, hallways, schools, fitness clubs & gyms, restaurants, conference rooms, libraries, and residential buildings



*Note: Colors may vary from actual tile.

Top Vinyl Sheet.

The Summita Collection is designed for projects that require high foot traffic endurance.



SM-8214



SM-8911



SM-8912



SM-8913



SM-8914



SM-8915



SM-8916



SM-8917



SM-8918



SM-8919



SM-8920

Applications: Hospitals, offices, factories & plants, hallways, schools, fitness clubs & gyms, restaurants, conference rooms, libraries, and residential buildings.



1.83m x 20m

2.6mm

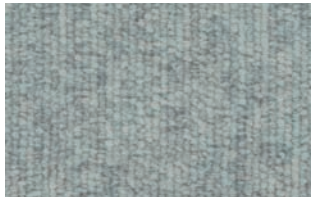
*Note: Colors may vary from actual tile.

Premium Vinyl Sheet.

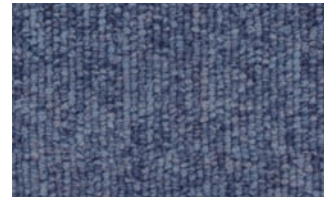
With a wide variety of marble and carpet designs, antibacterial property, durability, and affordable price, Corona Premium is one of our best selling vinyl sheet.



CR-8282



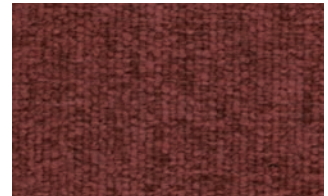
CR-8281



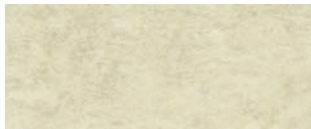
CR-8282



CR-8287



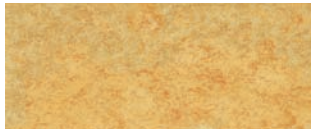
CR-8288



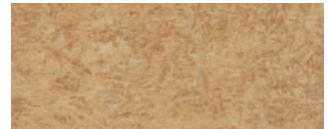
CR-8201



CR-8202



CR-8203



CR-8204



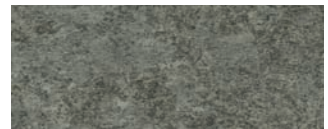
CR-8205



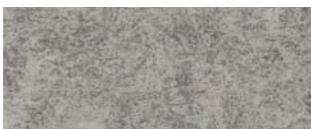
CR-8206



CR-8207



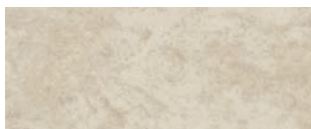
CR-8208



CR-8209



CR-8210



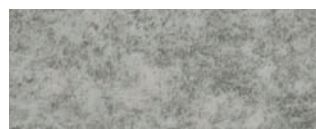
CR-8211



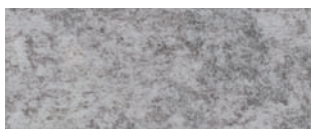
CR-8212



CR-8213



CR-8214



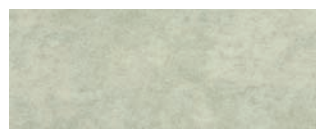
CR-8215



CR-8216



CR-8217



CR-8218



CR-8219



CR-8220



CR-8230



Applications: Hospitals, offices, factories & plants, hallways, schools, fitness clubs & gyms, restaurants, conference rooms, libraries, and residential buildings.

 1.83m x 20m  2.1mm

*Note: Colors may vary from actual tile.

Supple design. Best Value.

Comes in wood and granite patterns, Gracia Premium combines superior product qualities at best value.



GR-7104

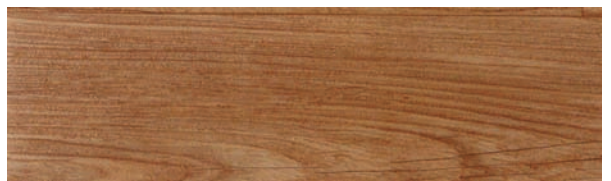
Wood



GR-7120



GR-7121

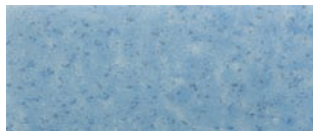


GR-7122

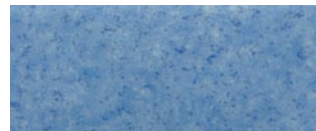
Granite



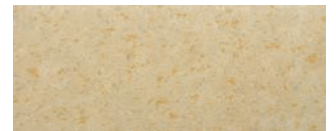
GR-7101



GR-7102



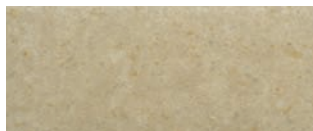
GR-7103



GR-7104



GR-7105



GR-7106



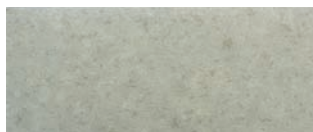
GR-7107



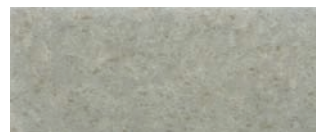
GR-7108



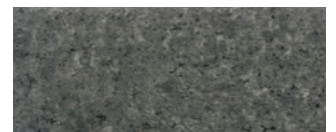
GR-7109



GR-7110



GR-7111



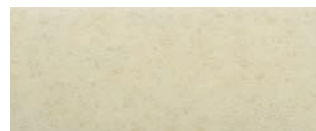
GR-7112



GR-7113



GR-7114



GR-7115



Applications: Hospitals, offices, factories & plants, hallways, schools, fitness clubs & gyms, restaurants, conference rooms, libraries, and residential buildings.



*Note: Colors may vary from actual tile.

The resilient rubber of choice.

The RubberTile Collection comes with the following properties: non-slip, chemical and fire resistant, dimensionally stable, indentation stability, good sound absorption, antibacterial treatment, non-toxic and eco-friendly, for a diverse commercial applications including transport, marine, hospitals and sports facilities.



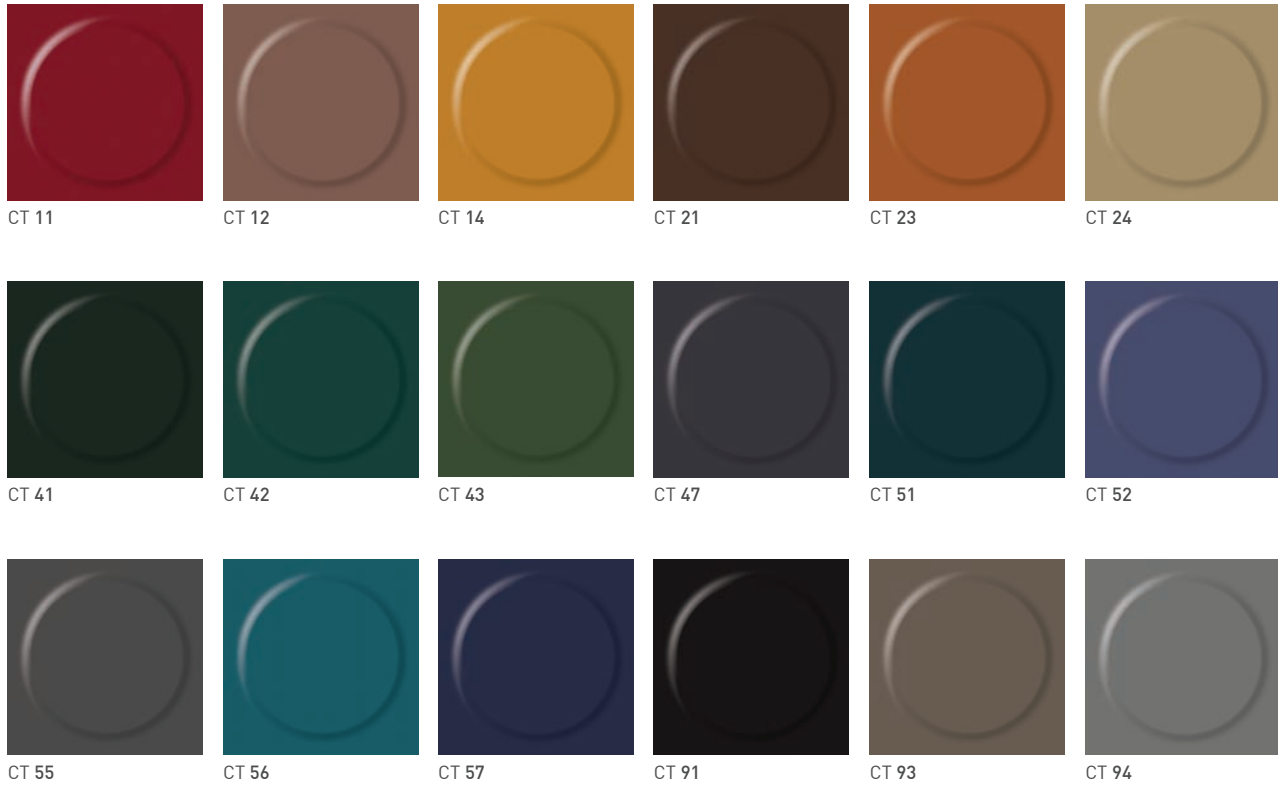
ANTI-SLIP



EXCELLENT SOUND INSULATION

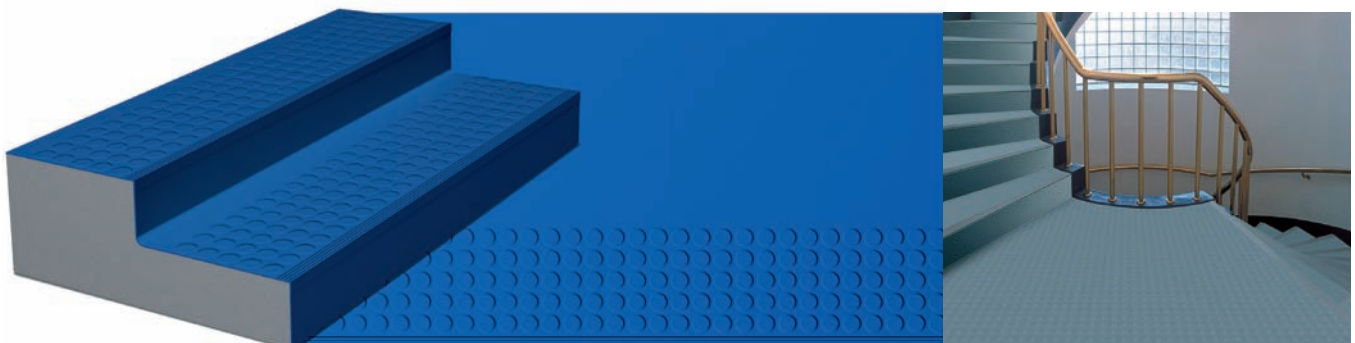
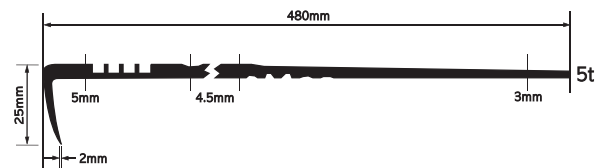
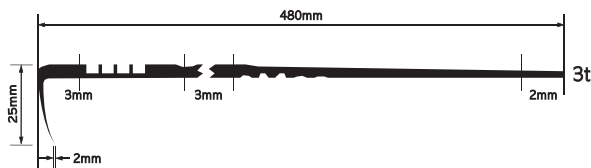
Applications: Airport, schools, hospitals, kitchens, industrial facilities & plants, transport facilities, and elevators.

COIN



STAIR TREAD

480 x 1230mm T : 3mm, 5mm
 480 x 1530mm T : 3mm, 5mm
 480 x 1830mm T : 5mm



*Note: Colors may vary from actual tile.

PLAIN

500 x 500mm  3.5mm



PT 14



PT 24



PT 52



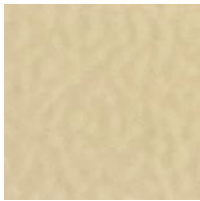
PT 93

EMBO

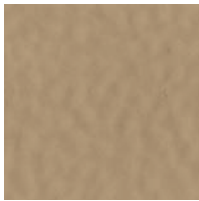
500 x 500mm  3mm



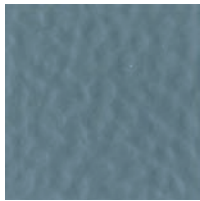
CMH 31



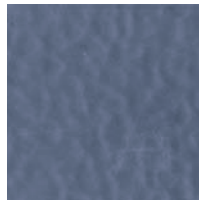
CMH 40



CMH 42



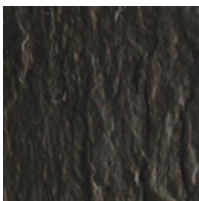
CMH 86



CMH 93

NATURAL

500 x 500mm  3.5mm



CML 20



CML 33



CML 42



CML 45



CML 93

SAND

500 x 500mm  3.5mm



SD 24



SD 55



SD 93

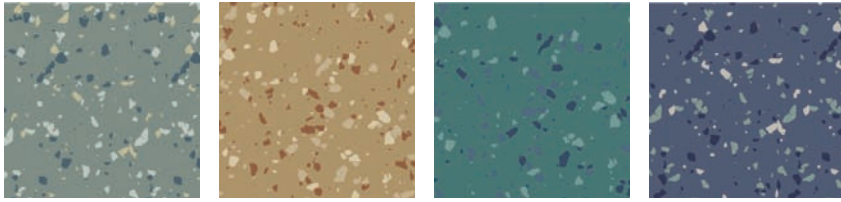


SD 94

*Note: Colors may vary from actual tile.

MEGASTONE

500 x 500mm  ↓ 3.0mm



NMS 31 NMS 44 NMS 88 NMS 93


MEGACOIN

500 x 500mm  ↓ 0.6mm / 3.4mm / 4.0mm



NMR 31 NMR 44 NMR 46 NMR 88 NMR 93

MEGAEMBO

500 x 500mm  ↓ 3.0mm



NMH 31 NMH 44 NMH 88 NMH 93



NMS 44

*Note: Colors may vary from actual tile.

SAFETY PLAIN

↓ 2.0mm  1.22 x 15mm

↓ 3.0mm  1.22 x 12mm



STM 8098



STP 1000



STP 4100



STP 8000

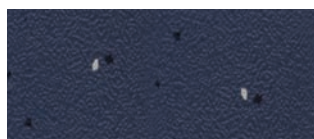
SAFETY MEGA

↓ 2.0mm  1.22 x 15mm

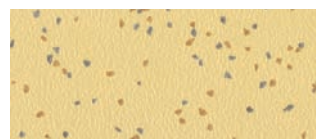
↓ 3.0mm  1.22 x 12mm



STM 1021



STM 3021



STM 4043



STM 4143



STM 5043



STM 8645



STM 8098



STM 9091



STM 9221

*Note: Colors may vary from actual tile.

Your choice carpet in style



EXCELLENT SOUND INSULATION

CarpetTile Collection offers a wide range of choices from solid, graphic, and nylon designs. Be creative without undermining quality and performance with the following properties: electrostatic dissipation, and special backing construction made of non-woven PET, glass fiber, and pure PVC.

Applications: Offices, hotels, banks & financial facilities, conference & audio rooms, libraries & training centers, theatres, and cinema rooms.

NYLON 66 Graphic

Dimension : 7.0-8.0mm(T) x 609mm(L) x 609mm(W)



new
HC 5972



new
HC 5973



new
HC 5976



new
HC 5991



new
HC 5994



new
HC 5995

Dimension : 7.0-8.0mm(T) x 500mm(L) x 500mm(W)



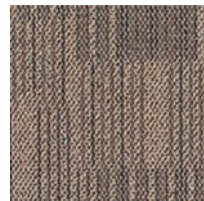
HC 5852 / HC 5854



HC 5852



HC 5854



HC 5892



HC 5893



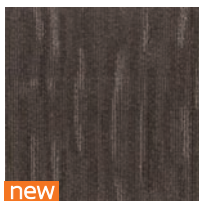
HC 9051



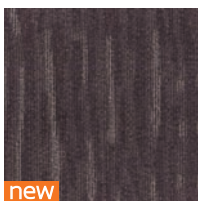
HC 9061

NYLON Graphic

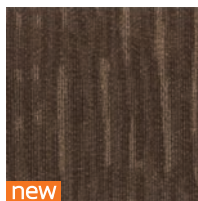
Dimension : 6.5-7.0mm(T) x 500mm(L) x 500mm(W)



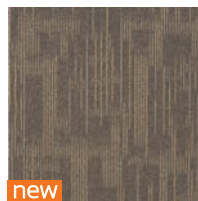
new
HC 5613



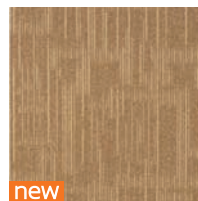
new
HC 5614



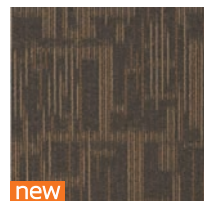
new
HC 5615



new
HC 5691



new
HC 5693



new
HC 5695

*Note: Colors may vary from actual tile.

PP Graphic

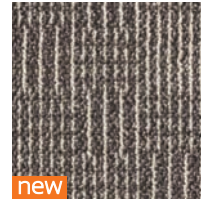
Dimension : 7.0-8.0mm(T) x 500mm(L) x 500mm(W)



HC 5083



HC 5032



HC 5034



HC 5035



HC 5081



HC 5082



HC 5083



HC 5121



HC 5151



HC 5223



HC 5224



HC 5252



HC 5301



HC 5311



HC 5329



HC 5343



HC 5361



HC 5364

PP Solid

Dimension : 6.5mm(T) x 500mm(L) x 500mm(W)



HC 903



HC 911



HC 914



HC 915



HC 924



HC 971



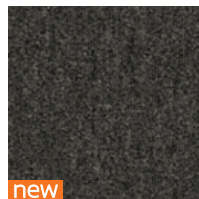
HC 972



HC 995



HC 997



HC 998

*Note: Colors may vary from actual tile.

Ascend to the top.

The Kissen Collection is a special anti-static tuft carpet with sound insulation feature, 100% polyurethane backing to prevent foul odor even for long-term use, and high-end nylon-fiber for excellent abrasion resistance. It meets the CRI green label eco-certification (LEED), making it a green product.



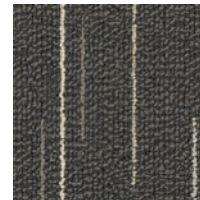
■ Dimension : 4.0mm(T) x 500mm(L) x 500mm(W)



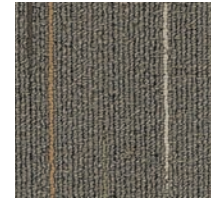
Velocita Gold Kissen 01 / Accelerata Darkgrey Kissen 04 / Potenza Ebony Kissen 05



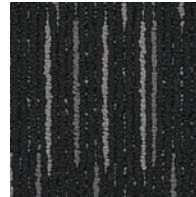
Velocita Gold
Kissen 01



Accelerata Darkgrey
Kissen 04



Potenza Ebony
Kissen 05



Luce Jet
Kissen 12



Motricita Myrtle
Kissen 13



Corso Russet
Kissen 17



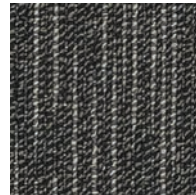
Codigo Battleship
Kissen 18



Piovre Ivory
Kissen 20



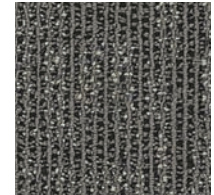
Avorniello Midnight
Kissen 24



Temporal Onyx
Kissen 29



Disegno Slategrey
Kissen 32



Schema Coldgrey
Kissen 33

Applications: Computer rooms, offices, hotels, banks & financial facilities, conference & audio rooms, libraries & training centers, theatres, and cinema rooms.

한화 **Unibamboo** SPECIALTY FLOORING

The Charm of
Natural Bamboo.

Unibamboo tiles are thin bamboo strips pressed on a vinyl backing, providing a flexible, light weight, sound absorbing, and economical flooring solution.

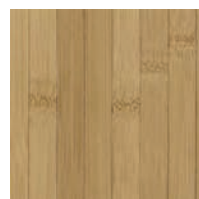
■ Dimension : 4.0mm(T) x 500mm(L) x 500mm(W)



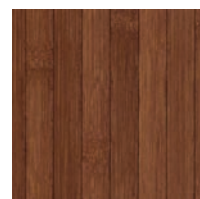
Caramel Yellow 6002



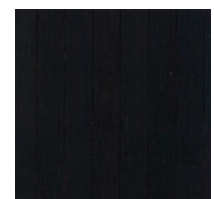
Natural Yellow
6001



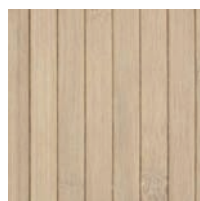
Caramel Yellow
6002



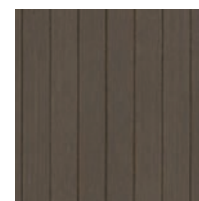
Mahogany Brown
6003



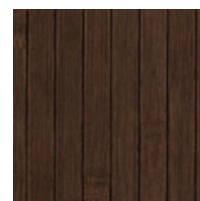
Black
6004



White Beige
6005



Taupe Gray
6006



Colonial Dark
6007



Applications: Ceilings, walls and floorings of any interior space, especially theatres, audio rooms, studios, and residential spaces.

*Note: Colors may vary from actual tile.

Eco-friendly commercial flooring

The CleeTile is a breakthrough product composed of Thermo Plastic Olefin (TPO), an eco-friendly material that is safe for the environment, especially for children, durable and ideal for heavy traffic areas.



Cashmere CL 202 / Elephant CL 204 / Lime CL 211

Experiment showing CleeTile's clean burn property



Clee Tile

Ordinary PVC Tile

- ▶ Clean burn: no dioxine and chlorine gas
- ▶ Less emissions of CO₂
- ▶ PVC-free, DOP-free, formaldehyde, dioxine & phenol-free
- ▶ Free from top six heavy metals- Pb, Cd, Hg, Cr⁶⁺, PBBs, PBDEs
- ▶ Endocrine disruptors free
- ▶ 100% Homogeneous composition

■ Dimension : 3.0mm(T) x 450mm(L) x 450mm(W)



Applications: Educational institutions like schools & kindergartens, medical facilities like hospitals, healthcare centers, business offices, shopping areas like malls, boutiques and retail stores

*Note: Colors may vary from actual tile.



INSTALLATION

Things you will need:

1. Hanwha Resilient Floor Tiles and Planks
2. Hanwha or any water-based adhesive for vinyl
3. Adhesive applicator or spreader
4. Meter tape or tape measure
5. Pencil or chalk (as marker)
6. Carpenter's square
7. Sharp utility knife

Subfloor Preparation:

1. Install over smooth, leveled and dry concrete or plywood floors.
2. Subfloor must be clean and free from dust, grease, grime, or wax.
3. Patch or fill cracks if necessary.
4. If old floor has poor texture, use leveling compound to smoothen the surface.
5. If subfloor

Has existing resilient,

- ▶ Remove existing resilient tiles.
- ▶ Clean and remove adhesive residues.

Is wood,

- ▶ Check wood if it is firmly nailed or attached to the original subfloor.
- ▶ Repair any holes, indentations or open joints.
- ▶ Manually sand or use electric sander to smooth out rough areas.
- ▶ It must be smooth, clean, dry, and dust-free.

Is concrete,

- ▶ Make sure it is smooth and leveled.
- ▶ Make sure its pH moisture has been neutralized.
- ▶ It must be free from holes, cracks and humps.
- ▶ It must be clean, dry, and dust-free.

To start Installing:

1. Find and mark guidelines to the center point of the room.
2. Lay row of tiles in both directions from the center.
3. Adjust to see the least wastage from cutting at the borders.

Spread Adhesive:

1. Cover and spread evenly the water-based adhesive to a portion of the floor.
2. Allow adhesive to set according to manufacturer's instructions.
3. For walls and ceiling installations, use contact cement or construction adhesive instead of waterbased adhesive.

Tile Laying

1. Place the first tile into place starting at center. Make sure it is positioned correctly and press down firmly.
2. Continue by laying full tiles from center.
3. Make sure arrows at the back all point in the same direction

Cutting and Fitting

1. Place the tile to be cut exactly over the last full tile; lay another full tile against the wall and mark the cutting line where the tiles overlap.
2. Using your sharp utility knife, cut tile on line. Check if the cut tile fits. Don't force fit.
3. Install tile and press firmly into place.



CARE GUIDE

Initial Maintenance (After Installation)

1. Sweep or vacuum dust and dirt.
2. Remove excess dried adhesives using a clean damp cloth.
3. Diluted stripping solution can be used hard to remove stains.
4. If necessary, dry buff with rotary machine fitted with 3M™ red cleaning pad or equivalent brush.

Daily/Regular Maintenance

1. Sweep or vacuum regularly.
2. For heavy dirt and stains, wash with floor cleaner or dish washing liquid.
3. Do not use strong detergents and abrasive cleaners.

Periodic Maintenance

1. For light scrubbing – Dry brush with rotary machine fitted with 3M™ red cleaning pad or equivalent brush.
2. For deep scrubbing – Spray clean while using rotary machine fitted with 3M™ blue/green cleaning pad or equivalent brush.
3. For a glossy shine, apply and polish with a liquid floor polish. Polishing machine fitted with 3M™ white polishing pad can also be used.

Restorative Maintenance – Stripping

1. Flooring can be stripped periodically using recommended diluted stripping solution.
2. When using automatic floor scrubbing machine, it is recommended to use single disc 3M™ scrubbing pad blue/green or equivalent brushes for VCT; red or equivalent brush for LVT and Vinyl Sheets.

Warning : Do not use black or brown 3M™ pads or their equivalent as this will permanently damage the floor.

Luxury Vinyl Tile

Product Line	Dimension	Thickness	Wear layer*	Packaging (pcs/box)	Coverage (sq.m / box)
Abstract	450 mm X 450 mm	3.0 mm	0.15 mm	16	3.24
Carpet	450 mm X 450 mm	3.0 mm	0.20 mm	16	3.24
Granite	450 mm X 450 mm	3.0 mm	0.15 mm	16	3.24
Leather	450 mm X 450 mm	3.0 mm	0.15 mm	16	3.24
Marble	450 mm X 450 mm	3.0 mm	0.15 mm	16	3.24
Metal	450 mm X 450 mm	3.0 mm	0.15 mm	16	3.24
Stone	600 mm X 600 mm	3.0 mm	0.15 mm	9	3.24
Unique	450 mm X 450 mm	3.0 mm	0.15 mm	16	3.24
WildTile Square	450 mm X 450 mm	3.0 mm	0.07 mm	16	3.24
Daecheung Maru	914.4 mm X 100 mm	3.0 mm	0.20 mm	36	3.29
	920 mm X 180 mm	3.0 mm	0.20 mm	20	3.31
WideWood	186 mm X 940 mm	3.0 mm	0.15 mm	19	3.32
WildTile Wood	186 mm X 940 mm	3.0 mm	0.07 mm	19	3.32

Vinyl Composition Tiles

Product Line	Dimension	Thickness	Packaging (pcs/box)	Coverage (sq.m / box)
Deluxe	300 mm X 300 mm	2.0 mm	55	4.95 mm
	300 mm X 300 mm	3.0 mm	37	3.33 mm
	450 mm X 450 mm	3.0 mm	16	3.24 mm
Conductive	450 mm X 450 mm	3.0 mm	16	3.24 mm
Deluxe Gold	450 mm X 450 mm	3.0 mm	16	3.24 mm
MVP	450 mm X 450 mm	3.0 mm	16	3.24 mm

Vinyl Sheets

Product Line	Dimension	Thickness	Wear layer*	Coverage (sq.m / roll)
Brita	1.83 m X 20 m	3.0 mm	0.70 mm	36.60
Corona Premium	1.83 m X 20 m	2.1 mm	0.30 mm	36.60
Gracia Premium	1.83 m X 20 m	2.0 mm	0.45 mm	36.60
Imperial Premium	1.83 m X 25 m	3.0 mm	0.40 mm	45.75
Imperial Original	1.83 m X 25 m	2.7 mm	0.40 mm	45.75
Myoungga Premium	1.83 m X 30 m	2.2 mm	0.20 mm	54.90
Myoungga Original	1.83 m X 30 m	2.0 mm	0.15 mm	54.90
Sorigium	1.83 m X 18 m	4.5 mm	0.50 mm	32.94
Summita	1.83 m X 20 m	2.6 mm	0.65 mm	36.60

Specialty Flooring

Product Line	Dimension	Thickness	Packaging (pcs/box)	Coverage (sq.m / box or roll)
CarpetTile - Nylon 66 Graphic	609 mm X 609 mm	7.0~8.0 mm (± 0.5 mm)	16	5.93
	500 mm X 500 mm			5.00
CarpetTile - Nylon Graphic	500 mm X 500 mm	6.5~7.0 mm (± 0.5 mm)	16	4.00
CarpetTile - PP Graphic	500 mm X 500 mm	7.0~8.0 mm (± 0.5 mm)	16	4.00
CarpetTile - PP Solid	500 mm X 500 mm	6.5 mm (± 0.5 mm)	16	4.00
Clee Tile	450 mm X 450 mm	3.0 mm	16	3.24
Kissen [Carpet]	500 mm X 500 mm	9.0 mm	16	4.00
RubberTile - Coin	500 mm X 500 mm	3.0 / 4.0 mm	12	3.00
RubberTile - Embo	500 mm X 500 mm	3.0 mm	20	5.00
RubberTile - Megacoin	500 mm X 500 mm	4.0 mm	16	4.00
RubberTile - Megaembo	500 mm X 500 mm	3.0 mm	20	5.00
RubberTile - Megastone	500 mm X 500 mm	3.5 mm	20	5.00
RubberTile - Natural	500 mm X 500 mm	3.5 mm	20	5.00
RubberTile - Plain	500 mm X 500 mm	3.0 mm	12	3.00
RubberTile - Safety Mega	1.22 m X 15 m	2.0 mm	1roll	18.30
	1.22 m X 12 m	3.0 mm		14.64
RubberTile - Safety Plain	1.22 m X 15 m	2.0 mm	1roll	18.30
	1.22 m X 12 m	3.0 mm		14.64
RubberTile - Sand	500 mm X 500 mm	3.5 mm	12	3.00
RubberTile - Stair Tread	480 mm X 1230 mm	3.0 / 5.0 mm		0.59
	480 mm X 1530 mm	3.0 / 5.0 mm	1	0.73
	480 mm X 1830 mm	5.0 mm		0.88
Unibamboo	500 mm X 500 mm	4.0 mm	16	4.00

* Standard wear layer indicated.

Wear Layer can be customized at .07mm, .15mm, .20mm, .30mm, .50mm, or .70mm depending on usage.



ISO 9002 Quality Management System

Hanwha products undergo high quality procedures to ensure that products are produced, installed and serviced at its best.



Korea Eco-label

Hanwha flooring is compliant to the institute's various operations related to improvement of eco-products and product environmental friendliness.



ISO 9001 Quality Management System

Hanwha manages its business and follows procedures that is believed to produce optimal results for the company and for its customers in terms of designs and development.



Low Carbon Emission Certification

In recognition of its responsibility to contribute to international efforts to reduce greenhouse gases and compliance to the "Low Carbon Green Growth" policy of the government.



ISO 14001 Environmental Management

Hanwha develops and controls its operations in such a way that its processes minimize negative environmental effects, and comply with applicable laws and environmental requirements set by the government or other environmental institutions.



KOSHA 18001

Hanwha has established safety and health management systems for its employees and partners in the construction and manufacturing industries.



Korean Standard Association

All product features, specifications and test results were conducted using KS M 3802:2008 method for PVC and KS K 2621 method for Carpet, to ensure the promised premium quality and performance of Hanwha flooring products.



Green Label Plus

Indoor Air Quality (IAQ) is an important environmental consideration, since we spend 90% of our time indoors. CRI uses scientifically established standards to test carpets, cushions and adhesives to help specifiers identify products with very low emissions of VOCs. Hanwha Kissen is Green Label Plus certified.



Marine Equipment Directive

Hanwha vinyl sheet and RubberTile are MED-D-1392 certified under the Marine Equipment Directive, bearing the seal of conformity to marine equipment requirements and specifications both in the design and production phase.



Green Company Designation

Hanwha L&C Corporation bears the mark of Green Company Designation by the Ministry of Environment (South Korea). This translates to compliance to standards and regulations set towards an ecologically sound and environmentally healthy company.



36 Months Warranty

Hanwha warrants its products against manufacturing defects for 36 months from date of purchase.

The better choice for all your door and window needs.



Made in Korea • From 100% Virgin Raw Materials



Better Value



Energy Efficient



World-Class Quality



Outstanding Designs



Economical

Sealed hermetically for lowering heating and cooling costs.



Airtight

Excellent airtightness to excel soundproofing and thermal insulation.



Resistant

Excellent resistance against chemical reaction.



Watertight

Anxiety-free watertightness for severe rainy weather condition.



Soundproof

Soundproof effect to prevent noise completely.



Firesafe

Resistance to high temperatures.



Durable

No pitting, peeling, and drying out.



Weather Resistant

Can withstand against intense typhoon conditions.

Distributed by: G2K Corporation

For inquiries: (02) 361-9450 loc 216 | 0932-8656940, 0917-8828466

www.hanwha.com.ph

AUDIO-VIDEO SOLUTIONS CORP.

Microphones • Headphones • Loudspeakers • Monitors • Optical Digital Network Systems • Projectors • CCTV Systems



- Stunning sound at high sound pressure levels, high quality components, reliability, and all at a reasonable price
- High quality components
- Developed by experienced audio designers and FOH engineers
- Flyware and stacking components are easy to use and meet the strictest safety requirements

VUE-LINESPEAKERS



VUE-LINESUB



PREMIUMAMPS



- Crystal clear sound
- Designed for all kinds of multimedia applications
- Long operational life

DAVE8XS

PORTABLE MULTI-MEDIA SYSTEM
Also Available in white



MAUI28

ALL IN ONE
ARRAY SYSTEM



LD MIXER



LD INSTALLATION SERIES



STINGER SERIES



STINGER SUB



LD PROCESSOR



- Complete range of professional audio equipment, including amplifiers, speakers, (conference) microphones and much more
- High-quality products for a competitive price
- Quality comes first

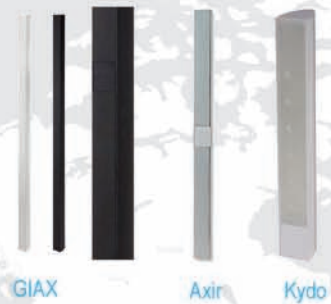
OUTDOOR WALL SPEAKER



CEILING SPEAKER



COLUMN SPEAKER



DIGITAL MATRIX SYSTEMS SERIES



POWER AMPLIFIER



- Revolutionary technology
- Ultra compact
- Portable
- Powerful speaker solutions, sound systems, professional audio equipment



The Best Sound
Come from
One Source

- Innovative solutions for the most demanding sound reinforcement requirements
- Sound systems with the highest, most consistent and predictable performance levels
- Innovatively created with exceptional longevity, representing the best possible investment



WST Technology
Variable Curvature

Distributed by: Audio-Video Solutions Corp.

For inquiries: 234-2902, 234-2903 | Fax No. 234-2922

www.avscorp.com.ph



Builder's Choice Inc. (BCI) is a privately held company formed in November of 2003, primarily engaged in the importation, distribution, marketing and sales of premium flooring solutions. Since its establishment, BCI has been delivering innovation and creativity as the trendsetter in the PVC flooring solutions industry in the Philippines. BCI is the exclusive distributor of Hanwha Flooring and a proud member of The WOW Group.



Better. Better. Better.
www.wowgroup.com.ph

The WOW Group is mainly engaged in importing, distributing, marketing, sales and services. The group offers a diverse portfolio of premium products from established brands sourced around the world. Targeting the sectors of Entertainment, Energy & Environment, as well as Food & Wellness; these have been chosen to ensure that the Filipinos get better quality products, backed by unrivalled service.

Our Philosophy is simply that,
"The Filipino Deserves Better!"

ENTERTAINMENT



Your best videoke partner!



ENERGY & ENVIRONMENT



FOOD & WELLNESS





Exclusive Philippine Distributor:



1081 EDSA Balintawak, Quezon City
Tel No.: (632) 362-1016, (632) 362-2540 | Fax No.: (632) 330-3589
www.hanwha.com.ph

A member of:

